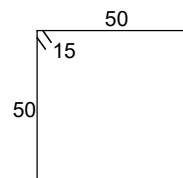
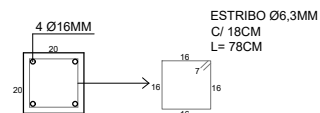


N1-2X 4 Ø 8.0mm - C/12,5 - L=190

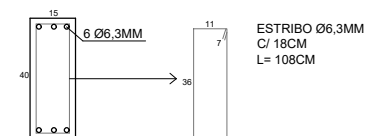


N2- 3 Ø 8.0mm - C/10 - L=230

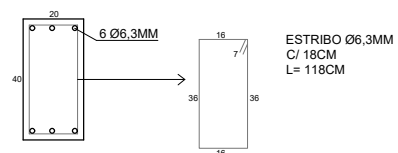
PILARES 20X20 (17,60M)



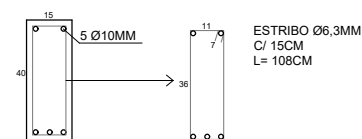
VIGAS INTERMEDIÁRIAS 15X40 (11,20M)



VIGAS DE BALDRAME 20X40 (11,20M)



FUNDO DA CAIXA 15X40 (11,20M)



## DETALHES ESTRUTURAIS

TORRE CAIXA D'ÁGUA  
 ESCALA 1/25



**PREFEITURA  
 MUNICIPAL DE  
 DESCANSO - SC**

PROJETO:

TORRE DA CAIXA D'ÁGUA

LOCAL:

ESCOLA CACHOEIRINHA

DESENHO:

DETALHES ESTRUTURAIS

DESENHADO POR:

SETOR DE ENGENHARIA

DATA:

JULHO/2021

PRANCHA:

06/06